



The Lehigh River Report

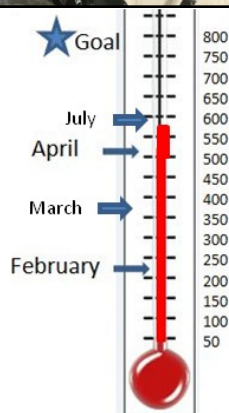
The Voice of the Lehigh River Stocking Association

2014 Spring Update from the LRSA

LRSA's Running Total:
Trout Stocked:
338,500

Inside this issue:

Trib Survey, Misc. Notes	2
Lehigh River Fly Fishing	3
Explore the Lehigh	4
Water Quality Program	5
Lehigh Fly Fishing Journal	6
Lunkerfest 2014 Results	7
LRSA Board and Officers	8



Sponsorship Count, 570 so far in 2014

EXPLORE THE LEHIGH THE SHALE LEDGES

In this Newsletter we will explore the section of the river from the 873 Boat Ramp (located under the 873 bridge) to the Walnutport Boat Ramp. This run is only a few miles long however contains some very unique and productive water including the "Ledges." The Ledges are a series of drops the river makes just before the half way point in this trip and creates a very interesting cascade of water that can really hold fish. This section also sees much less fishing pressure than the section above and below so can be a good choice to fish at almost anytime. It is difficult to reach some of the water from shore and certain areas are not wade friendly due to depth and current. The best way to hit this run is to drift it, stopping along the way to fish the many special spots. If you are new to drifting it is an ideal run to learn how to drift the river as it is not overly technical or difficult section. It will also put you on the water that you want to be on and you will be able to get to the better side of the hole or run....which always seems to be the other side when fishing from the bank.

If you have been thinking about investing in some type of boat to drift the river I strongly recommend it. You do not have to spend a lot of money or buy an official drift boat. A raft, single man river runner pontoon or fishing kayak are outstanding for many sections of the river and quite affordable. Cabela's recently had a small river runner pontoon on sale for 249.00 which if used correctly should be good for quite a few seasons. Not only will this provide you with more and better fishing opportunities they are just plain old fun to use.

Now, I do caution you that not all water conditions are appropriate for drifting on this type of craft and at times the river bank is still the best method. Practice common sense and do not drift in areas of the river that are too powerful for the craft you are in or during high water events. Also it is the law that you have an approved PFD on the craft. By taking some simple precaution it is a very safe and enjoyable way to expand your fishing. I might also add that this is not just

for the young people in the crowd. I am well over 50 and most of the guys I float with are in the same range...so it is never too late to start. You will not regret it.

So, back to the fishing....this is a great section to ride on the river but you can access many of the spots from the rail trail on the east bank of the river. Follow it upstream from the Walnutport side of the river bridge. Biking will save you time and get you to the water faster. The trail runs between the river and the old canal and dead ends near the Szokes Pool.

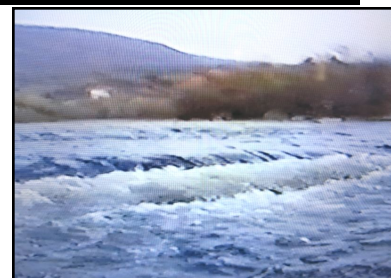
How to get to the Shale Ledges Section:

The run starts under the 873 bridge at the boat ramp. All you need to do is cross the 873 bridge (Slatington Bridge) and turn left ¼ mile down the road following the sign for the Lehigh Gap Nature Center passing by Szokes Bros work yard. You will find ample parking near the bridge. The trail is next to the upper parking area and you can follow this downstream to the water you want to fish. The upper section is a distance from the water but as you head down the trail and river will converge and are much closer.

You can also start in the lower section and work your way upstream. Just park in either the Walnutport or Slatington trailhead access lots on either side of the river (Main street on either side of the bridge). The last 1/8 mile or so of this run is shallow and benign water so you will have to walk upstream a bit before fishing high quality water.... The closer you get to the middle of this run the better... The area around the airport is great so look for the planes taking off and landing and head that way. The D&L trail on the Walnutport side of the river will take you upstream to some quality water.

The Water:

Cont'd on page 4



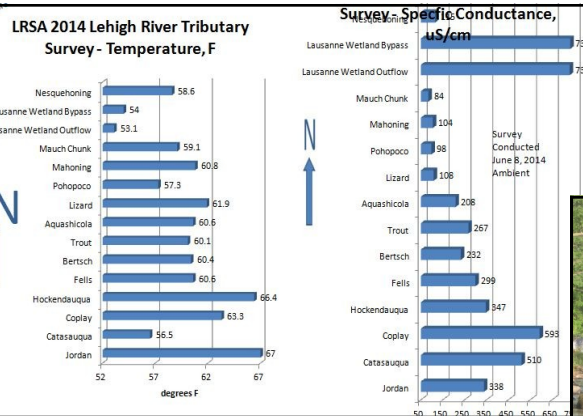
Thank you to Air Products

The water quality program is made possible largely through funding from Air Products. This year \$1,000 was received to support our work. Thanks also to Wildlands Conservancy for \$440 this year.

Lehighon Waste Water Treatment plant is a very important facility, as are all WW plants, to the water quality of the Lehigh River. Pictured below are Mike Takerer, plant Supervisor, Jim Deeble and Matt MacConnell of LRSA after a facility tour on June 24th. The plant is world class facility built 12 years ago and uses tertiary treatment along with a UV system and sludge reed beds. Did you realize that about 20% of the river flow is effluent from treatment plants?



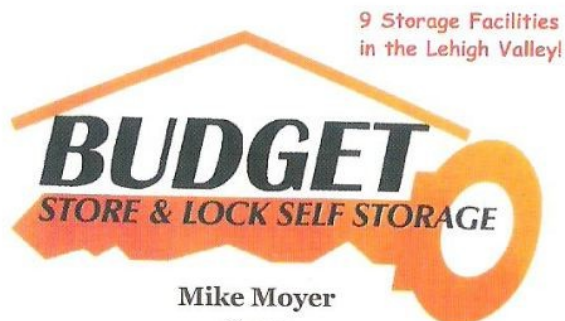
LRSA Board at Luncheon with Representative Doyle Heffley at right



LRSA 2014 Tributary Survey Conducted June 8th. Go to LRSA.org to see the report. Steve Chuckra taking a reading on the Pohopoco in photo below



Sample Location
Lausanne Tunnel
Lehigh at Nesquehoning
Nesquehoning
Mauch Chunk
Mahoning
Pohopoco
Lizard
Aquashicola
Lehigh at Trout
Trout
Bertsch
Lehigh at Fells
Fells
Lehigh at Hockendauqua
Hockendauqua
Coplay
Catasauqua
Jordan



Mike Moyer
Owner
610.952.2122

9 Storage Facilities
in the Lehigh Valley!

Sean M. Heffelfinger, MD
Michael F. Benavage, MD
Family Medicine



610.264.0411

1400 Main Street • Catasauqua, PA 18032

Lehigh River Fly-fishing

After a long winter and seemingly even longer run of high water this spring, I was very happy to finally see fishable conditions on the Lehigh River. By fishable, I mean the type of water you can fish without skipping from spot to spot in an almost desperate effort to work what I refer to as high water contingency areas. These are the places that hold fish when the water is nearly running through the trees, yet safe to fish. Though it is possible to catch trout like this, these conditions do not produce the classic fishing that fly anglers wait all year for. If you live to fly-fish, you will begin to see increases in your blood pressure when you check the Lehigh flow reports only to see that the river is yet again blown out during the prime spring and early summer hatches.

As with most trying situations, the clouds usually clear. In my case, the river eventually dropped to fishable levels while the mayfly hatches were still going strong. When I made it to water, I felt like I needed to make up for lost time. Thanks to L.R.S.A., I encountered nice numbers of very respectable fish. Traditional wet fly fishing was productive through mid-June during the morning and evening bites. I had good success on large Ginger Quills and Hendrickson wets, sizes 10 – 12. This took me back to my roots, as I learned to fish wet flies on the Lehigh River some 35 years ago. There were good numbers of Ginger Quills on the water in the evenings with the hatches growing heavier towards dark. It also happened that the fish were taking them off the top at that time without undue ex-

amination. The action really improved near sunset and became intense as dark set in. I find it hard to make good dry fly presentations to fish I can hear but can't

see. So, I normally switch from dries to dragging a wet version of what the trout are eating an inch or two under the surface. This will allow you to attract strikes from fish that are feeding on top as well as trout that are taking emerging flies. I like to fish large barbless wet flies after dark because the fish don't seem to be as size selective at night and it makes releasing fish in the dark much easier.

Lately, I find that I have been preoccupied with the Lehigh. This is mostly because I have not fished it regularly in 28 years. It's also because I'm addicted to fly-fishing and haven't lived within reasonable driving distance of a river during that time. I lived away for all of my adult life and continued to fish because I love to. Part of that love is driven by an infatuation with my home waters. I've had the opportunity to fish great water and to learn a technique or two that are not widely practiced here at home. For one reason or another, fishing wet flies is not typically productive on many western streams and I adopted nymph fishing out of necessity. As it turns out, nymphing is very effective on the Lehigh under the right conditions. Especially if you know where the fish are. If you don't, nymphing can be a painfully slow way to find them.

I mention nymphing because I'm finding that the traditional wet and dry bites are starting to slow down now, happening earlier in the morning and later in the evening than they did only a few weeks before. This is due to summer water temperature increases and the tapering hatch activity that typically occurs in early July. Nymphing is a good way to get into less active fish without waiting for the magic hour. To again fill your evenings with productive fishing, I recommend nymphing your

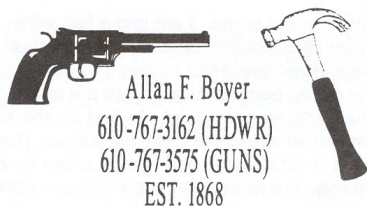


way upstream through your favorite stretches and switching to wets about an hour before dark. You can then re-fish the same sections with your favorite wets or dries when the bite turns on just before night-fall. I prefer not to stay too late even though the bite is still fairly heavy because I don't like to work every fish in my favorite spots excessively. This is especially true when the water temperatures get near 70 degrees.

I'm happy to say that the perceived need to make up for lost time has started to go away, leaving room for a more enjoyable perspective in its place. I hope that the good hatches last a while longer and they very well might, as water temperatures are staying under 70 degrees. I hope my observations help your fishing. However, success can be a tricky thing. My wife thinks that I need counseling because I fish too much. She had me on a twelve-step fishing cessation program: I just hit step #13, back to fishing! Hopefully, you can avoid similar interventions and have a great time fly-fishing the Lehigh River.

—By Steve Chuckra

A. F. Boyer Hardware & Guns



Live Bait Available

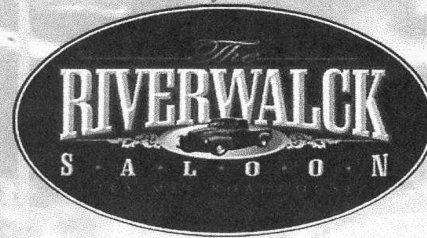
Mon, Tues, Thurs 8-5:30
Wed 8-12, Fri 8-8, Sat 8-5
130 Main St.
Statinaton, PA18080

Live Entertainment • Deck Party Weekends Open 7 Days (Bar Till 2am)

Visit the "Best Stocked Bar In Carbon County"
Children's Menu

610-852-2323
ROUTE 248 • PARRYVILLE
www.riverwalcksaloon.com

Put A Little South In Your Mouth! Save The Ta-Ta!



**Shale Ledges—Cont'd from page 1**

Starting at the 873 ramp you can get right into the fishing. The small island you see just downstream of the ramp (I call it Canada Island as it reminds me of an island on a Canadian Lake with trees and shrubs, only a mini version) is where it all starts. The water will deepen in front of the island and continues very deep and has good pull on the left side of the island. This deep water is especially good in the early season and in the fall.

The river will bend right and then left in a wide rapid ending in a deep straight run and pool. This is Szokes Pool and is a top Lehigh River spot for fishing. You don't want to miss this one. Lots of water, fast, deep, slow, it is all here. Fishes well with both bait and flies and can hold tremendously big fish. This Pool needs to be fished from the east or left bank which will provide access to most of the run.

From here the river takes slight bends but is always moving at a quick and steady pace. Interrupted by a few islands and river bottom rock hills this stretch continues for another ¾ mile and is paralleling the airport. The run has some very fishy water. The river narrows noticeably and then opens wide to the "Ledges". Talk about Trout water Habitat....this is it. The water drops off a wide series of shale ledges creating deep pockets, swirls and many many feeding seams. Side to side this can be a very productive

section. Use caution if wading please. There is lots of water to fish here so plan on staying for a time. After a few visits here you will find your own favorite places to cast and I am sure you will be back the The Ledges again and again.

The hits don't stop here as the water following the fast ledges also has some distinct characteristics that make it special. With all those rocks, fast water and oxygen the Ledges are a bug factory. So the water below reaps the benefits of this bug factory. Deeper, slower and more consistent in flow rate than the Ledges this section is a fly fisherman's dream. It can especially come alive in the evening during peak hatches with rising trout all over the place. Our own Tom Gyory, who is an accomplished fly fisherman and has a penchant for dry fly fishing has told me this is one of his favorite places on the river. If this is also your passion I suggest you head out soon to scout it out and follow up with a rod in hand.

Techniques and Time to Fish

Like most places on the river, the further into the season you go the better the early and late trout bites will be. In early season and during the cooler fall weather you can show up and fish this section almost anytime

and have success.

This section also drift fishes so nicely I can't help mention it again. Many places on the river you can access the best water on one side of the river, however in this section it seems like at times it is the east side and others the west. The boat gives you the advantage of doing this and in this section it is a big advantage.

As I speak of in the paragraphs above, there are a few runs in this section that are custom made for the fly. Both wet and dry will have impact. This section also fishes well with bottom bouncers like trout magnets and plastics. I would actually like to try open spooling or try a spay type set up like they do for steelhead in this section. Using a slip float and riding the current seems like a sure fire way to get things going here.

By the time you read this we should be closing in on the fall trout season. What a great run to kick off your fall fishing and get on some new water. The Ledges run will surely not disappoint you in both quality and quantity of water to fish. Catching those fish, well that is up to you but I can assure you this.....they are in there.

- Contributed by Vince Spaits



Lehigh Dental

Dr. Thomas R. Gyory, D.M.D.

(610) 266-0466

Visit Us at www.lehighdental.com

General Dentistry • Cosmetic Bonding • Extractions
Root Canal Therapy • Dentures, Partials
Crowns • Implants • Children's Dentistry

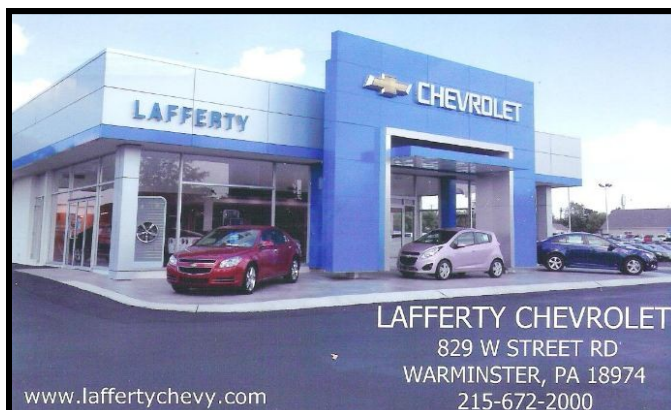
223 EUGENE ST. • CATASAUQUA, PA 18032



71 S Wyoming Ave.
Edwardsville, PA
18704

Vince Spaits
Owner
215.272.3175

270 Union St.
Luzerne, PA
18709



LAFFERTY CHEVROLET

829 W STREET RD
WARMINSTER, PA 18974
215-672-2000

FREIGHTLINER TRUCKS

Horwith Freightliner

PO BOX 7, RT. 329
Northampton, PA 18067

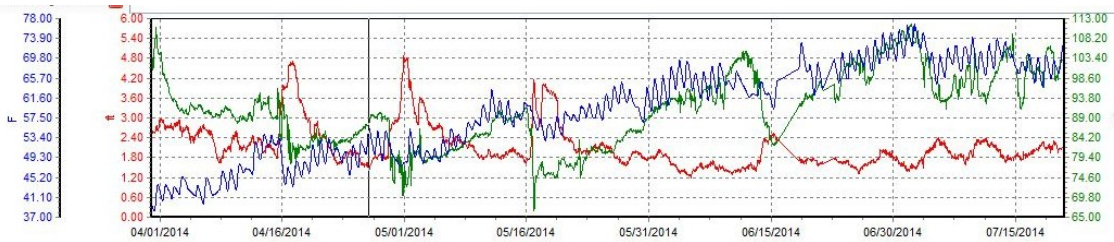
TEL 610-261-2220 FAX 610-261-8807
800-220-8807



Water Quality Program Report

Probe 2 has been deployed at Palmerton since March 31. Some of the on-line data was pulled off the Internet and pasted below. The temperature ranged from 38F to 77F with average 59F. Pretty decent trout habitat temperatures at this midpoint in our stocking

range. Also plotted is the depth, you can see storm events 4/17, 5/1 and 5/17. The specific conductance is plotted too, this is a measure of how much stuff is dissolved in the water (like salts). The lower the number the cleaner the water. You can see the value decrease during storm events where the pure rain water dilutes the salts in the river. The value ranged from 66 to 112 uS/cm with average of 91.



	uS/cm	Deg F
Min	66	38
Avg	91	59
Max	112	77

Probe 1 is deployed in Walnutport and collecting data locally (not on internet due to cellular modem malfunction). We will be comparing the two probes to see how WQ parameters compare in real time between Palmerton and Walnutport.

On June 8th the annual tributary survey was conducted. WQ data from each trib reported in document on our web page or facebook. See page 2.



Visit the "Best Stocked Bar In Carbon County"
Open 7 days a week (BAR OPEN UNTIL 2am)
DJ's on the Weekends



610-852-2323
ROUTE 248 - PARRYVILLE
www.riverwalcksaloon.com

Water Quality probe deployed in Palmerton in fast water to record data online.



LRSA met with Palmerton Municipal Authority to fine tune terms for installation of a fish ladder on Parryville dam (they own it). We continue to seek funding of \$186K for this project from the Zinc Pile Superfund Settlement Trustees.

A Sierra Club grant of \$7,500 was received for work on the Lausanne Tunnel mine drainage site in Jim Thorpe to increase flow of tunnel discharge through the wetland treatment system. Work will also install data logging of flow through the wetland.

Lehigh River Fly Fishing Journal—by Tom Gyory

Summer is here and the Lehigh is still producing. The extended cold temperatures made fishing slow in the early spring but kept the water cool and fishable for trout into July. I prefer years like this one especially if the rain amounts are reasonable. I probably had more float trips with the Trout Scout this year than ever. However, I didn't fish much before Lunkerfest because the Lehigh was high and cold. The water temps stayed below 65 degrees until late June. The hatches and the top water fly action seem to be the best around this temperature. I really enjoyed the fishing and the fishermen who joined me this year. Here are some of the more memorable trips.

The first trip was with the Kuebler brothers Mark and Dennis over the Memorial Day weekend. We caught some nice trout on



woolie buggers and spinners in the afternoon from Leighton to Bowmanstown and then had some top water action early in the evening but it died off by the late evening. The water was still a bit cold.

Next, my good neighbor Ken Dietrich and his friend Dave Shannon from Lancaster ventured down the river. We floated from 895 bridge in Bowmanstown to Ken's property below Walnutport. That is about a 9 mile float. We had a beautiful day and the fishing



was good. Dave presented me with a unique fly as a present. Dave and I are both dentists so the tooth fly made from an extracted incisor was an appropriate fly for our trip.

My favorite trip lately has been from the East Penn Boat ramp in Bowmanstown to the 873 bridge ramp at the Lehigh Gap. It is really easy in and easy out at the ramps especially



for older guests. I hope the proposed ramps in Walnutport and Treichlers get completed soon because easy access is the key to utilization of the river. I took famous outdoor writer John Punola and his wife Nancy on this trip. John is writing an article on the Lehigh for June 2015 Fisherman Magazine. Fishing was a little slow on the first trip but we did manage to catch a lamprey. The picture I posted of the lamprey on the LRSA facebook page went viral with over 2000 views. On our



second trip, John caught a few more trout with rubber jigs that he was testing for a bait company. He contacted me recently and still wants another shot at the Lehigh in the fall.

At the end of this same week, the LRSA hosted a trip with Pennsylvania Outdoors television show with host Don Jacobs. Vince Spaits came through with his spinning minnow technique and made the trip a success. President Matt MacConnell supplied the marketing information

on the LRSA in his interview and I made sure the camera man Brian got the good shots of guide Paul Davidson's boat. If you missed the show on WNEP channel 16 you can view it on their website.

Some of the best fly fishing this year was in June. The sulphur and blue winged olive hatches were great. One overcast cool day in mid-June, Chuck Morgenstern and I went out to one of my favorite spots where Bertsch



Creek flows into the Lehigh. The hatch was good and the trout were not fussy. I wish more days were like that one.

Brothers Charles and Doug Duponte won a trip with me at the Delaware River Shad Fisherman's Association dinner last winter. We had a good trip and the sandwiches that Doug made for the trip were outstanding. The sun was high in the afternoon and the fish were short hitting our offerings but as the evening came the fish started to rise and we hooked into



a few.

And finally, the end of June was my last float trip on the river. The water was getting warm and low but LRSA members Gary Klein and Greg Gliwa were up to the challenge. They





Journal—cont'd from page 6

threw hardware all afternoon and caught a few fish and stayed out till dark at the mouth



of the Aquashicola. The flies were hatching and the fish were rising but only for the last 30 minutes of light. As we saw that night



again, it is not the kind of fly that you throw but the presentation and timing of your cast that is most important.

I want to thank my wife Maureen for shuttling the truck and trailer for most of our trips. It makes the end of the day quicker and easier to get home.

I really love the Lehigh. I hope you all can get a chance to see the river's beauty and have fun fishing it like I do. Remember, the more people that we can get to see the value of the river, the more LRSA sponsors we will have and the better we can make it a great fishery.

See you on the river!

By Tom Gyory

Lunkerfest 2014 Results

Thanks to the 200+ contestants that came out to Bowmanstown for the 4th annual Lunkerfest held at the musky pool at the new East Penn boat launch area. Fishing started at 8:30am and at the close at 3pm there were fifty winning fish logged, some of these released and many more caught and directly released. The largest fish caught was by Fred Foster with a 21" palomino. The winners are listed at left with the size trout roughly split 50/50 brown and rainbow. Prizes awarded were donated from local establishments. The LRSA would like to thank all of the following for their prize contributions:

Fred Foster	21"
Ryan Scott	20 5/8
Chris Collings	19 1/2
Jason Moser	18 3/4
Paul Davidson	18 3/4
Kenny Sutton	18 1/2
Tim Hummel	18 1/2
Colin Wescoe	18 1/4
Melissa Morgan	18
Josh Eichler	17 1/2
Matt Burns	17 3/8
Josiahs Cooper	17
Jeremy Sala	17
Sean Mccollum	16 3/4
Martin Williams	16 3/4
Chris Hill	16 3/4
Jeff Strauf	16 3/4
Bill Marlow	15 3/4
Matt Gibais	15 5/8
Kevin Reed	15 3/8
Paul Troutman	15 5/8
Joe Mucka Jr	15 1/4
John Ermlick	15 1/4
Andrew Sutphin	15
Chris Collings	15
Mark Bollinger	15
Kenny Bretz	15
Geoff Gallagher	15
Charles Decker	14 3/4
Skip Rothermel	14 5/8
Joshua Disanto	14 1/2
Cheryl Krystopa	14 1/2
Chris Krystopa	14 3/8
Daniel Comisac	14 3/8
Chris Fox	14
Jonathan Chevalier	14
Larry Davis	14
Chase Deluca	14
Kevin Hoffmn	13 3/4
Quinn Horn	13 3/4
Chris Smith	13 1/2
Austin Hunsicker	13 3/8
Austin Rogers	13
Faron Frable	13
Matt Lear	12 3/4
Tom Mattis	12 1/2

LL Bean, Cabela's, Rivers Adventures, Skinner Guide Service, Flies by George, Josh Day Guided Salmon trip, Catfish Creek Lodging, Archery Addiction, Dave's Sporting, Big Daddy Reels, Klotz' Bait, River Walck Saloon, Boyer's Hardware, Wildlands Conservancy, Willy's Bait, Archery at the Glenn, Ron Kistler Tax Service, Bob's Taxidermy, Blue Mountain Rod and Gun, Coplay News Agency, Chris's Bait.

There were a dozen or so fish larger than 21" released for the contest, two magnificent fish—1 brown & 1 rainbow were ~28". One contestant informed us that he saw a young angler walk out with a "3 ft" fish. LRSA netted about \$3,000 from the event (will help pay for the great trout stocked this year). Also signed up 22 new sponsors!

The original scheduled date was May 17th, but the Lehigh was high'n mighty at 7000 cfs that day so we had to re-schedule to May 31st for on a perfect day (usgs.gov graph of Lehigh flows below).



2014 Sponsor of the Year Award presented to Brian Tartar by LRSA at Lunkerfest (from left Vince, Greg, Matt, Brian Tartar, Rep. Doyle Heffley, Chuck)



LEHIGH RIVER STOCKING ASSOCIATION

LRSA

PO Box 97
Trexlerstown, PA 18087

Email:
Lehigh.River.Stocking.Association@gmail.com

A Non-Profit Organization
Dedicated to the Restoration and
Revitalization of the Lehigh River
Trout Fishery.

Sponsors and interested people are wel-
come to join us at our meetings— 7pm the
last Tuesday of every month at the Market
Café at Wegmans, Tilghman St., Allentown

www.lrsa.org

Friend us on
[facebook](https://www.facebook.com/lehighriverstockingassociation)

LRSA Board of Directors: LRSA Officers:

Vincent Spaits

Tom Gyory, DMD

Greg Gliwa

Karl Imdorf

Matt MacConnell, P.E.

Jim Deeble

Chuck Morgenstern

David Carl

Gary Klein

President: Matt MacConnell, 610-657-2707

Vice President: Greg Gliwa, 484-515-5343

Treasurer: Tom Gyory, 610-730-9359

Merchandise: Chuck Morgenstern, 610-216-4022

Ads: Gary Klein, Vince
Spaits

Newsletter Editor: Matt
MacConnell

In Memoriam—LRSA
Founder, Ted Miller



To all of our VALUED SPONSORS:

Due to the unexpected closure of Birch Creek Hatchery/Nursery last August and our need to adjust to new trout supply costs while providing the same number of trout we have traditionally stocked in the Lehigh, we find it necessary to raise the yearly basic sponsor fee to \$25 starting in Nov 2015. Lunkerfest 2015 pricing will be retained at \$20 but will be \$25 for non-sponsors (must show sponsor# on L/F application!). To further increase our trout purchasing power, we plan to again pre-pay for trout in December to obtain a 7% discount (worth about \$2,000) by using our line of credit. We have nearly paid off the 2014 loan (THANKS TO YOU and a successful Lunkerfest!) but are depending on the fall ticket sales to finish paying down the loan so please buy some tickets! With 2015 just months away, and the tight finances in 2014, we felt the need to raise the sponsorship price \$5 and hope that you will continue to show your support. We are however going to offer a price increase beater: Anyone who renews BEFORE DECEMBER 10th 2014 will be able to renew (or join as a new sponsor) for \$20, same as this year. ALSO: ANYONE WHO GETS THREE(3) NEW SPONSORS WILL RECEIVE ONE(1) YEAR FREE SPONSOR CREDENTIALS AND NEWSLETTERS (please be sure to let us know if you do this—thank you).

Thanks again to all our sponsors, without your support the LRSA would not be able to sustain the robust trout fishery we have on the Lehigh. Looking forward to the rest of 2014, hope to see you at Canal Fest in Walnutport, and fishing the great Lehigh River. —LRSA Board

LRSA SPONSORSHIP FORM

Yes, I do want to support the Lehigh River Stocking Association in the effort to restore, revitalize and restock trout into the magnificent Lehigh River. Is this New or Renewal Sponsorship _____

Name _____ Address _____

City _____ State _____ Zip _____ Phone _____

Email _____ Do you want to be contacted to help stock the river _____

Basic Sponsorship --- \$20. All sponsorships include badge (or badge decal) ID card and subscription to Newsletters

Silver Sponsorship --- \$40. You will receive a LRSA T-Shirt State your size: Sm _____ Med _____ Lrg _____ XL _____ XXL _____ Dont send T

Gold Sponsorship---\$60. You will receive a LRSA Hat (or _____ don't send hat)

Platinum Sponsorship --- \$100. You will receive a LRSA Hat and T-Shirt or you will receive a Sweatshirt. Circle your preference and state your size Sm _____ Med _____ Lrg _____ XL _____ XXL _____ Dont send merchandise

Life Time Sponsorship --- \$250. You will not to renew each year.

Conservation Sponsorship --- (Catch and Release) \$70. You will receive a special LRSA Hat and \$20 will be allocated to the LRSA Conservation Program. (_____ don't send hat)

Diamond Sponsorship --- \$500. Receive a finely crafted Sterling Silver trout ring (4-6 wk del). State ring size _____

Amount of Sponsorship you would like to direct toward LRSA Conservation Programs _____

Please remit to : Lehigh River Stocking Association | PO Box 97| Trexlerstown | PA | 18087

Amount of Check Enclosed _____ Visit (or renew at) or web site : www.LRSA.org. Check out our facebook page or send us email at: Lehigh.River.Stocking.Association@gmail.com

Thank you for supporting the Lehigh River trout fishery